

Geography @ Portland

Geography is the study of Earth's landscapes, peoples, places and environments. It is about the world in which we live and its study will make you question how and why the world is changing, globally and locally but also, how human actions can complicate and intensify natural changes and events.

This is our first termly Geography at Portland newsletter. We hope to keep you up to date with what your son/daughter will be learning in their Geography lessons and of any other help or support that is offered.

Contacting the department

We have an open door policy within the department – encourage your son/daughter to see their teacher with questions before school/after school, at break or lunchtime.

If you have any concerns or wish to talk further about how to support your son/daughter, please contact us:

Mr D Briggs

Head of Geography

d.briggs@portland.outwood.com

Miss E McLelland

Teacher of Geography

e.mcllland@portland.outwood.com

Miss J Ward

Teacher of Geography

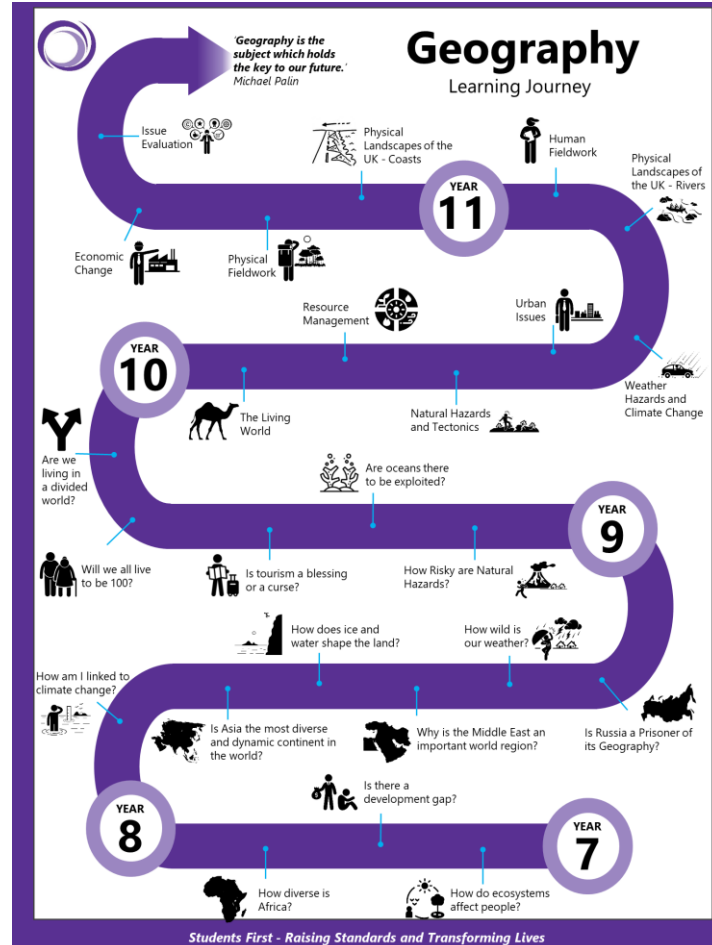
j.ward@portland.outwood.com

Mrs C Windle

Teacher of Geography

c.windle@portland.outwood.com

Our 5 Year Plan:



What will my child be learning?

Year 7 - How do ecosystems affect people?

This unit explores the vast biomes of the Earth - ranging from the polar environments to the hot and humid rainforests of the tropics and to the driest of hot deserts. It will also give us an opportunity to develop basic geographical knowledge such as latitude, longitude and continents.

By the end of the unit, students should be able to explain how and why plants and animals have adapted to their ecosystem.

Year 8 - How am I linked to climate change?

Students are continuing their work on climate change from Rollover. This critically important and topical unit explores the different causes of climate change and how it is affecting people and the environment. We will finish the unit by looking at some of the ways we can reduce the effect that climate change is having.

By the end of the unit, students should be able to explain why predictions about future climate change uncertain.

Year 9 - How Risky are Natural Hazards?

In this unit we find out why different natural hazards occur and how they affect people and the environment. We finish this unit by exploring the different ways that people try to manage natural hazards.

By the end of the unit, students should be able to explain how and why the impacts and responses to natural hazards are different in high and low income countries

What will my child be learning?

GCSE Geography

Students are following the AQA GCSE Geography course. The subject content is split into six units of physical and human geography.

There will be three examinations at the end of Year 11.

More information can be found at www.aqa.org.uk/subjects/geography

Year 10 – The Living World

The first unit of our GCSE course. In this unit, students will study ecosystems with a focus on the distinctive characteristics, challenges and opportunities of tropical rainforests and hot deserts.

Year 11 – Geographical skills – Fieldwork

Students will undertake fieldwork out of the academy to collect data. They will then, interpret, analyse and evaluate the information they have collected.

Once the fieldwork has been completed, we will start our final unit - **the changing economic world**. We begin by looking at global variations in economic development and quality of life.

GCSE Enrichment (2:30-3:30)

Monday – Revision of key content [S7]

Wednesday – Drop-in Revision [S5]

Friday – Exam Practice [S7]

Revision tip:



Flash cards

Simply create with questions on one side and answers on the other. You can colour code them for different topics and quiz yourself or others.

How can I help?

Parental support is encouraged at all times and would typically include:

- Taking an active interest in the areas of study
- Watching geographical television programmes and films with your son/daughter.
- Encouraging your son/daughter to read books, newspapers or internet articles relevant to the area of study.
- Helping your son/daughter to prepare for tests and to complete tasks on time.

Useful websites

geography.outwood.com

Fantastic revision website with tons of information, videos and links to other websites. Useful for Key Stage 3 and GCSE!

You will need your google login to access the materials.

senecalearning.com

This one is mainly for GCSE! Their smart learning algorithms are proven to make you remember topics better. If you get a question wrong, it will show you the content again but in a different format at a time when it's optimal for you to learn it.

Make sure you join your class group.

bbc.co.uk/bitesize

Great content for both Key Stage 3 and GCSE.

Go to bbc.co.uk/bitesize/examspecs/zy3ptycm for GCSE. It has been updated with new content aimed directly at our specification. There are even quizzes at the end of each section so you can assess your level of understanding.